

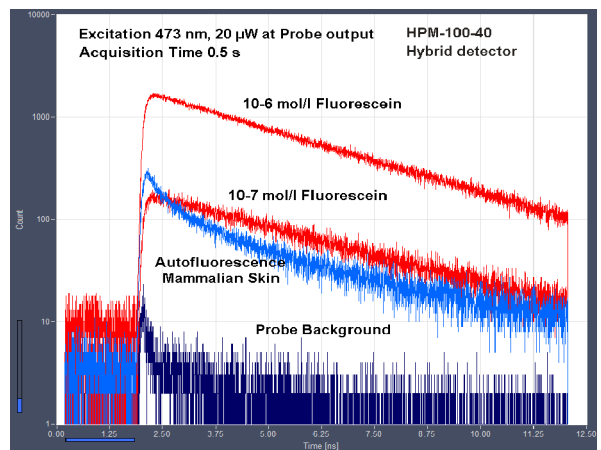
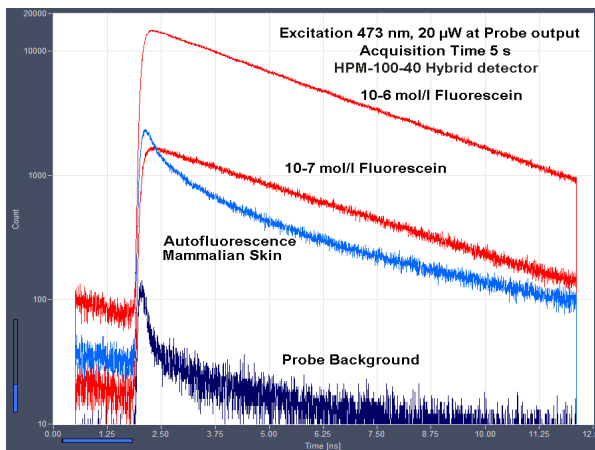
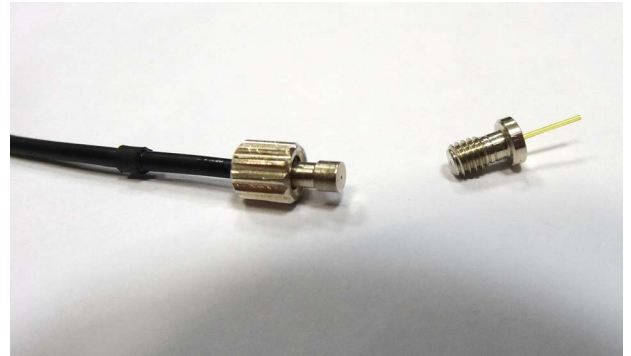
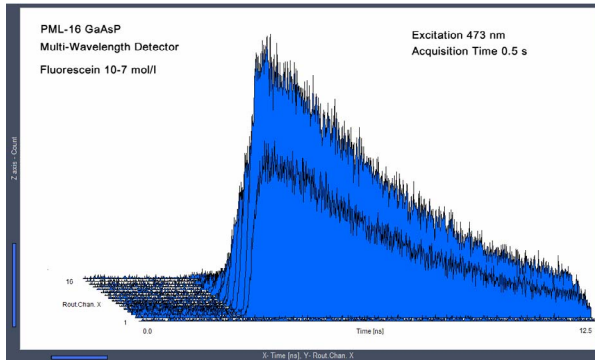
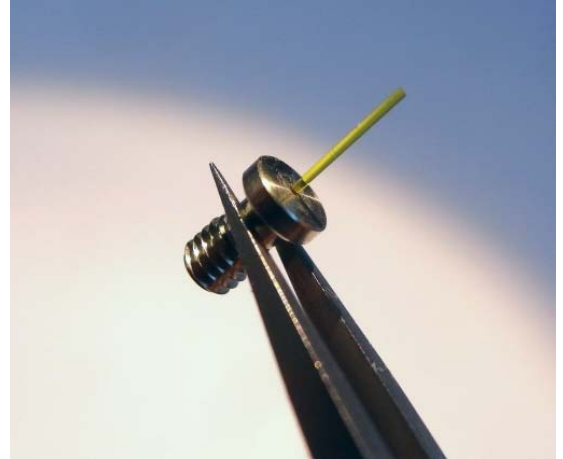


# IFP-201

# Implantable Fibre Probe

## Implantable Fibre Probe for *in vivo* Fluorescence Decay Measurements

- Single-mode excitation fibre
- Multi-mode detection fibre
- Small-size implantable fibre tip
- Tip removable from fibre system by miniature fibre connector
- Input compatible with bh ps diode lasers
- Output compatible with bh TCSPC detectors
- High detection efficiency
- Excellent sensitivity down to  $\mu\text{W}$  excitation power
- Negligible background fluorescence from fibres
- Extremely low motion artefacts
- Fully compatible with bh TCSPC systems
- Single-wavelength detection
- Multi-wavelength detection
- High speed recording of physiological effects
- Dynamic measurement of  $\text{Ca}^{++}$  concentration
- Dynamic measurement of metabolic changes



**Becker & Hickl GmbH**  
Nahmitzer Damm 30  
12277 Berlin, Berlin  
Tel. +49 / 30 / 787 56 32  
Fax. +49 / 30 / 787 57 34  
email: info@becker-hickl.com  
www.becker-hickl.com



Japan:  
**Tokyo Instruments Inc.**  
sales@tokyoinst.co.jp  
www.tokyoinst.co.jp



US Representative:  
**Boston Electronics Corp**  
tcspc@boselec.com  
www.boselec.com



China:  
**DynaSense Photonics Co. Ltd.**  
info@dyna-sense.com  
www.dyna-sense.com



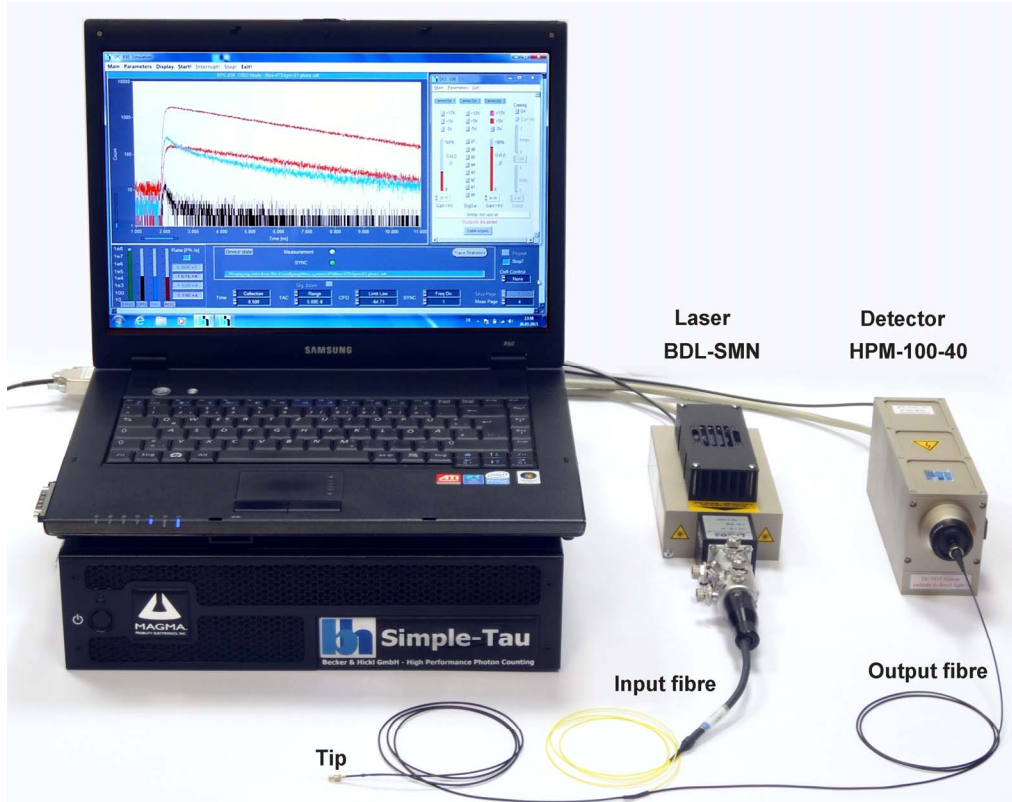
UK Representative:  
**Photonic Solutions PLC**  
sales@psplc.com  
www.psplc.com



# IFP-201

# Implantable Fibre Probe

## TCSPC System with Fibre Probe



Left to right: bh Simple Tau TCSPC system, BDL-SMN picosecond diode laser, HPM-100-40 hybrid detector

### Related Products

SPC-150, SPC-150N, SPC-160 TCSPC modules  
Simple-Tau compact TCSPC systems  
BDL-SMN and BDS ps diode lasers

HPM-100 GaAsP and GaAs hybrid detectors  
PML-SPEC and MW-FLIM multi-wavelength detectors

### Related Literature

G. Cui, S.B.Jun, X. Jin, M.D. Pham, S.S. Vogel, D.M. Lovinger, R.M. Costa, Concurrent activation of strial direct and indirect pathways during action initiation. *Nature* (2013)  
G. Cui, S.B.Jun, X. Jin, G. Luo, M.D. Pham, D.M. Lovinger, S.S. Vogel, R.M. Costa, Deep brain optical measurement of cell type-specific neural activity in behaving mice. *Nature Protocols*, 9(6) 1213-1228 (2014)  
W. Becker, The bh TCSPC Handbook, 6th edition. Available on [www.becker-hickl.com](http://www.becker-hickl.com). Contact bh for printed copies.  
Simple-Tau 150 compact TCSPC systems, data sheet. [www.becker-hickl.com](http://www.becker-hickl.com)  
SPC-150 TCSPC modules, data sheet. [www.becker-hickl.com](http://www.becker-hickl.com)  
HPM-100-40 hybrid detector, data sheet. [www.becker-hickl.com](http://www.becker-hickl.com)  
16-Channel multi-wavelength FLIM detector with GaAsP Cathode, data sheet. [www.becker-hickl.com](http://www.becker-hickl.com)  
BDL-SMN picosecond / CW diode laser family, data sheet. [www.becker-hickl.com](http://www.becker-hickl.com)  
BDL-SMN Picosecond Diode Lasers, handbook. [www.becker-hickl.com](http://www.becker-hickl.com)



More than 20 years experience in multi-dimensional TCSPC. More than 1500 TCSPC systems worldwide.